

ÖREBRO

INSTRUMENT
APPROACH
CHART – ICAO

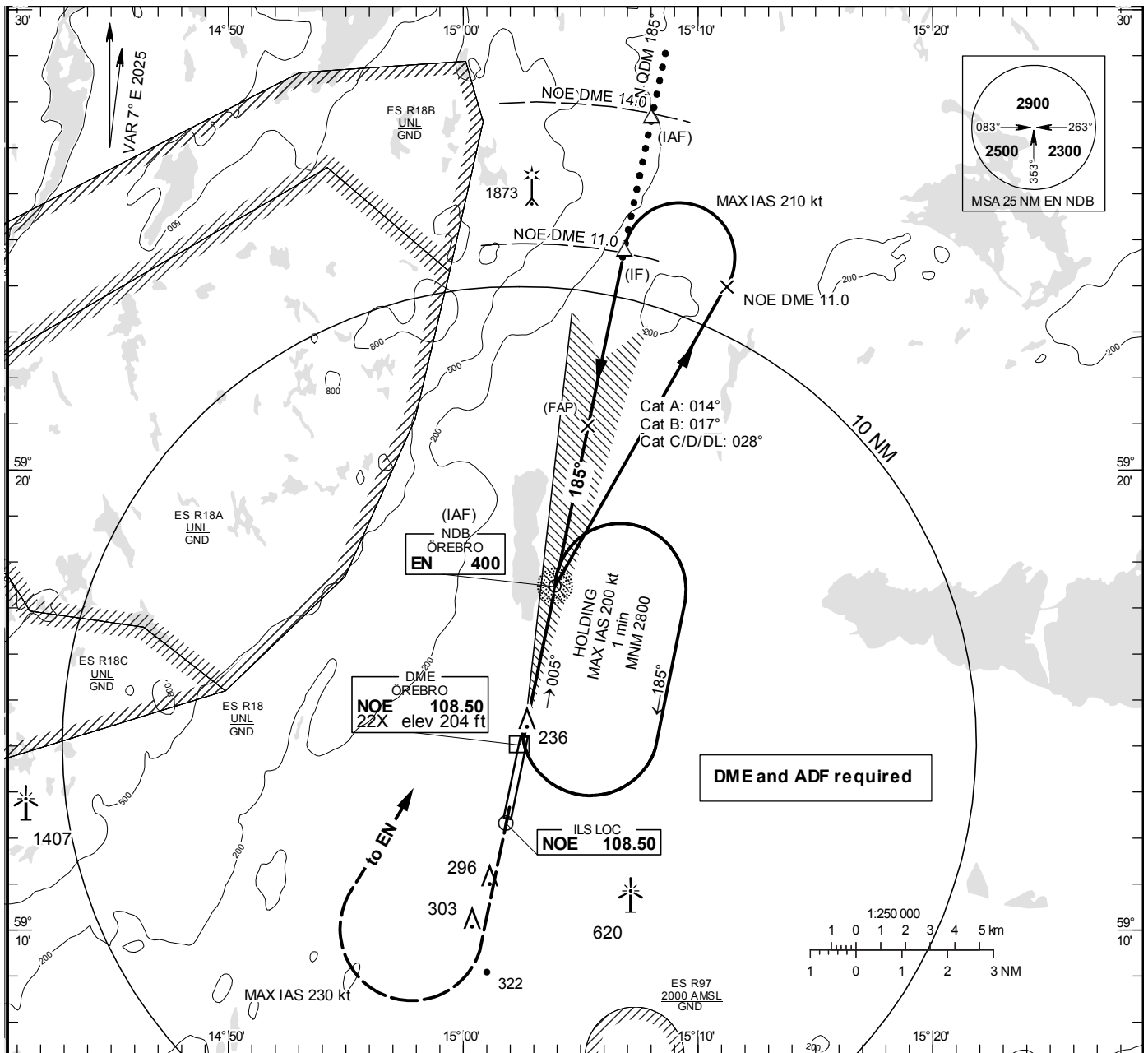
THR ELEV 191.1 ft, AD ELEV 192 ft

OCH are related to THR.
Circling OCH are related to AD ELEV.
BRG are MAG
ALT. HGT and ELEV in ft.

ÖREBRO TOWER

120.280

ILS y or LOC y RWY 19



TA 5000 ft AMSL

RDH 54.1 ft

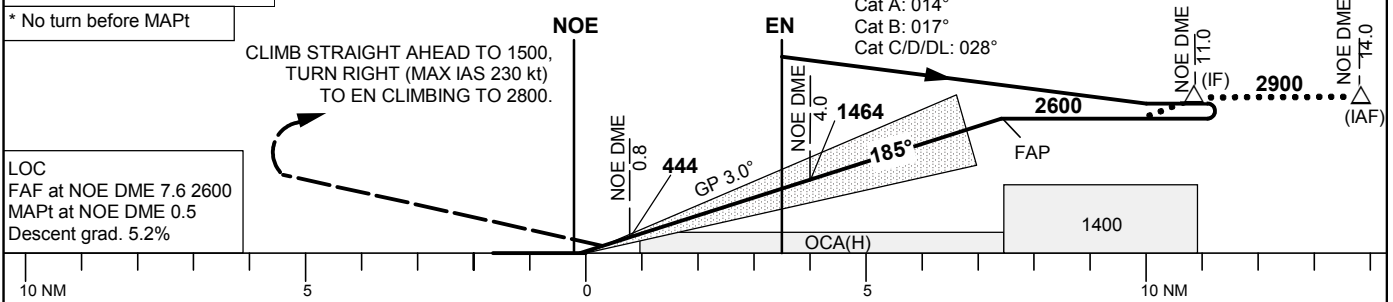
*Timing not authorized for defining the MAPt

OM replaced by NOE DME 4.0
MM replaced by NOE DME 0.8

MAX SPEED within base turn 210 kt IAS

MAX SPEED within missed approach turn 230 kt IAS

* No turn before MAPt

CLIMB STRAIGHT AHEAD TO 1500,
TURN RIGHT (MAX IAS 230 kt)
TO EN CLIMBING TO 2800.LOC
FAF at NOE DME 7.6 2600
MAPt at NOE DME 0.5
Descent grad. 5.2%

OCA (H)						Final approach	Distance FAF-MAPt 7.1 NM*							
Cat of ACFT		A	B	C	D	D _L	NOE DME NM	2	3	4	5	6	7	
Straight-in Approach	Cat I	354 (162)	361 (169)	373 (181)	383 (191)	387 (195)	ALT	820	1140	1460	1780	2100	2420	
	LOC	570 (380)					GS	kt	80	100	120	140	160	180
Circling		600 (410)	690 (500)	1020 (830)			Rate of descent	ft/min	425	535	635	745	850	955

CHANGE: Editorial.